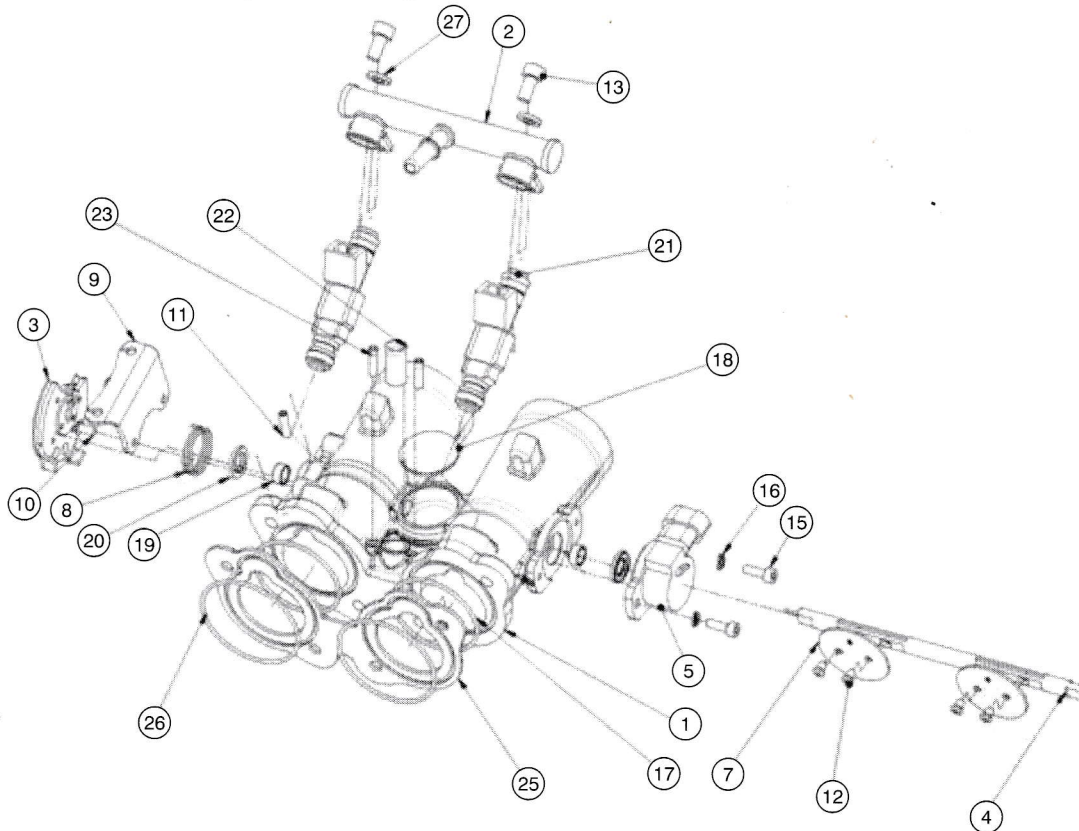


2.1.2 Throttle Body Assembly



Item No.	Description	Material	Notes	Qty.
1	Throttle Body	2L99	-	1
2	Fuel Rail	Mild Steel	BZP Electroplated	1
3	Departing Wheel	Mild Steel	BZP Electroplated	1
4	Spindle	EMA	Chemical Blocked	1
5	Throttle Pot-PF2C	-	-	1
7	38mm Butterfly	CW50BL H095	-	2
8	LHS Medium Spring	CS70	-	1
9	Throttle Cable Bracket	Mild Steel	BZP Electroplated	1
10	M4x8 Button Head	-	Use loctite 243 Torque 3NM	2
11	M4 Grub Screw	-	Use 243 loctite	1
12	M4 Butterfly Screw	-	Use loctite 243 Torque 3NM	4
13	M6x12 SHCS	-	Use 243 Loctite	2
15	M4x12 SHCS	-	-	2
16	M4 Split Washer	-	-	2
17	O Ring 44.17ID x 1.78	NBR 70	-	2
18	Plain Core Plug	Hard Aluminium	Use press- ensure plug does not rotate	1
19	Bearing 8x4.5	-	-	2
20	Spindle Seal Cover	-	Use grease when inserting	2
21	Bosch Ev6 Fuel Injector	-	-	2
22	IAVC Take Off	Aluminium	Use 648 loctite	1
23	Map Take Off	Mild Steel	Use 648 loctite	2
25	Heat Insulator Flange	B32 Silicon Glass	-	1
26	O Ring 51.1ID x 1.78	NBR 70	-	2
27	Heat Insulator Washer	B32 Silicon	-	2